



LOUISIANA Nursery & Landscape

NEWS

April, May, June 2000

Louisiana Nursery and Landscape News is a quarterly newsletter produced by the Louisiana Nursery and Landscape Association as a member service. The opinions and statements expressed herein do not necessarily represent the views of LNLA, its staff, Board of Directors, or its editors. Likewise, advertisements do not constitute an endorsement of the featured products or services. *

Newsletter Highlights

Upcoming Events	
LAN Name Change	
Presidential Affairs	pg 1
LAN Officers, Board and Committees	
Presidential Affairs (cont'd)	pg 2
Green Industry Forum	pg 3
Dodson Group	pg 4
LAN Awards 2000	
'First Friday' Programs	pg 5
LAN Membership Meeting	pg 6
LNLA Board Minutes	pg 7
The News	
Congratulations	
Scholarship Winners	pg 8
Mid-South Growers Conference	
LFBF Nursery Advisory & Ag Labor Seminar	pg 9
CNP Review & Exam	pg 10
LNLA Application	pg 11

UPCOMING EVENTS

- April 18** **LFBF Ag Labor Law Seminar,**
Radisson Hotel - Conference Center,
Baton Rouge, LA
- May 3** **Green Industry Forum,**
Radisson Hotel - Conference Center,
Baton Rouge, LA
- June 6 - 8** **Mid South Greenhouse Growers Conference,**
Ramadan Inn Southwest - Conference Center,
Jackson, MS
- July 6 - 7** **Certified Nursery Professional Review & Exam,**
Barnwell Center,
Shreveport, LA
- Sept 7 - 8** **Certified Nursery Professional Review & Exam,**
Botanical Garden - Study Room,
New Orleans, LA



LAN MEMBERSHIP APPROVES NAME CHANGE

The *Louisiana Association of Nurserymen (LAN)* is now the *Louisiana Nursery and Landscape Association (LNLA)*. After several board discussions over the last several years, a proposal for the name change was submitted to the membership during 1999 and the name change was approved by a wide margin at the 2000 annual membership meeting held during January at the Gulf States Horticultural Expo in Mobile. LAN, now LNLA, has been Louisiana's "green industry" association since 1954. Watch for the new logo and other promotional materials for LNLA coming soon! *



PRESIDENTIAL AFFAIRS

by Wanda Metz Chase

Greetings, and Happy Springtime! We hope everyone is having a great Season since our last visit at the GSHE Tradeshaw in Mobile. Congratulations to Mrs. Margie Jenkins on the Dr. James A. Foret Award. Mrs. Jenkins is the first female recipient of our most distinguished award, and well deserved, as she has committed her career to research and produce our most loved Robin Hill Azalea series as well as sharing many of her favorite plants. Scott Ricca, Clegg's Nursery, was honored as our Young Nurseryman of the Year. Also at the annual membership meeting, Gary Marmillion, owner of GreenThumb Nursery in Ponchatoula, was honored with a Distinguished Service Award in recognition of his development of our association website. In addition, Buddy Lee of Independence was recognized with a Professional Achievement Award for development of the Encore series of azaleas.

And, thank you, for recognizing me with Nurseryperson of the Year. I was truly overwhelmed (speechless, if you can believe that), and I am truly honored and blessed to serve you and our Nursery Industry.

As Don and I travel from the GSHE Tradeshaw in Mobile, we stop in Biloxi for a 24 hour Goal Setting meeting, both Business and personal. We review the accomplished Goals and determine new Goals (both short-term and long-term) for the coming year. In a similar fashion, the LNLA Board met in February to review past goals and establish new goals for our Association. And I would like to reflect on just a few of the 'biggies' in accomplished goals that I have witnessed over the past 7 years of serving on the LNLA Board of Directors.

cont'd on pg 2

2000 LNLA Officers, Board & Committees

OFFICERS

President

Wanda Chase, Imahara's Landscape, 225/ 767-2250

Past President

Rick Webb, Louisiana Growers, 504/ 748-5850

1st Vice-President

Randy Bracy, Bracy's Nursery, 504/ 748-4716

Treasurer

David Lowery, Windmill Nurseries, 504/ 796-9655

Executive Secretary

Allen Owings, LSU Agricultural Center, 225/ 388-2222

BOARD of DIRECTORS

Directors

Robby Barry, Barry's Nursery, 318/ 662-5318

Chris Bollich, Chris' Nursery, 318/ 748-6513

Dan Devenport, Dan's Nursery, 318/ 898-9295

Tom Fennell, Clegg's Nursery, 225/ 292-1930

Mike Hoogland, Hoogland's Nursery & Landscape, 318/ 746-8655

Murphy Johnson, George Johnson Nursery, 318/748-6715

Pat Newman, Folsom Nursery, 504/ 796-3088

Frances Thorne, Thorne's Plant Farm, 318/ 462-2914

Associate Director

Andy Zimlich, Lerio Corporation, 800/ 457-8113

Director/ Research & Education

Dan Gill, LSU Agricultural Center, 504/ 482-1107

Administrative Assistant

Laura Crnko, 225/ 667-4744

COMMITTEES

Education Committee

Chris Bollich, Ed Bush, Dan Gill, Allen Owings, Wanda Chase

Executive Committee

Randy Bracy, Wanda Chase, David Lowery, Rick Webb, Allen Owings

Finance Committee

Randy Bracy, Wanda Chase, David Lowery, Allen Owings

Louisiana Farm Bureau Nurserymen's Committee

Dan Devenport, Robby Barry

Membership Committee

Chris Bollich, Laura Crnko, David Lowery

Research Priority Committee

Robby Barry, Dan Devenport, Mike Levy, Pat Newman, Pat Steltz

Website Manager

Gary Marmillion

ANLA Governor and ANLA Lt. Governor

Wanda Chase, Margie Jenkins

GSHE Representatives

Wanda Chase, Rick Webb

Nursery/Landscape Expo Representative

Allen Owings

cont'd from pg 1

Presidents Column

In 1993, Dr. Warren Meadows and Walter Imahara resigned their service to LAN leaving behind a 10 year+ legacy founded on education and scholarships (not to mention a healthy bank account!). We continue our focus on education with the expansion of the certified nursery professional program, short courses, plant materials conferences and field days. And, LNLA has awarded over \$21,000.00 in scholarships to support (or better yet, to invest) into the future of Louisiana horticulture and research professionals.

J. C. Patrick focused our need for industry research to aid in greenhouse and woody production, field trials in weeds & fertilizers, and business issues. In 1997, the LNLA Research Priority Committee was founded to oversee the needs of Louisiana Horticulture research, and the association has committed to financing these vital projects.

Gerald Foret purposed to follow through with the concept of a Regional Gulf States Tradeshow, and in 1999, Louisiana and Mississippi joined Alabama in Mobile for the first Gulf States Horticulture Exposition (GSHE). I can remember one of the names considered was Gulf Regional & International Trade Show (GRITS), but they thought that might be too regional. Successful! Exciting! and Profitable! Gerald and the board also had the foresight to invest a small portion of LNLA savings in mutual funds, which has become an avenue to support many of our programs.

And the ever-controversial ... 'name change,' you all thought I was going to say Rick Webb. Interchangeable. Rick has been promoting the name change for many years to better represent our association membership. Louisiana Nursery & Landscape Association provides a consensus of the professionals representing our 'green industry'. It has been so well received, including 5 new landscape member firms in the first few weeks. Now we have the challenge, or the opportunity, to service the needs of these new members.

A goal is something you want that you can control, versus a desire, which is something you cannot control. A goal depends upon hard work that is action oriented. A wish is a desire without any subsequent effort. Someone said he who aims at nothing hits it every time. You have to define your goals and work to achieve its objectives.

A goal of the LNLA board is to improve communications between the industry and the public, and the association and its members. It is our desire to provide you with the tools to aid in communicating with your clients. Our wish would be for you to communicate your needs to us so we can best serve you.

LNLA has joined the Louisiana Public Broadcasting network to produce TV airing of professionalism within our 'green industry'. We will report times and stations as they become available to us.

LNLA has recently completed a LNLA membership directory to assist in locating industry businesses. We will be expanding this to include a buyer's guide for helpful location of plants and services.

The LNLA website is a vital link to doing business in this 21st Century. Both e-mail addresses and links to your home page are accessible from the LNLA website. I can

cont'd on pg 9



A GREEN INDUSTRY FORUM
featuring
MARK MAYBERRY

**“Heart and Soul Service”
and
“The Change Revolution”**

Wednesday, May 3, 2000
Radisson Hotel and Convention Center
Baton Rouge, LA

The Louisiana Nursery and Landscape Association is pleased to present Mark Mayberry providing programs on “Heart and Soul Service” and “The Change Revolution” on Wednesday, May 3rd at the Radisson Hotel and Convention Center in Baton Rouge. The Radisson is located on Constitution Avenue (I-10 frontage road) at the College Drive exit. Registration check-in begins at 9:00 am with the program beginning at 10:00 am and concluding at 3:00 pm. Registration is \$39/person with a catered lunch included. This is an excellent educational opportunity for Louisiana’s green industry personnel. For additional program information contact Allen Owings (phone 225.388.2417, fax 225.388.1068, e-mail aowings@agctr.lsu.edu). **Pre-registration is strongly encouraged.**

Registration

*please type or print name clearly

Business Name _____

Address _____

City/State _____ Zip _____

Phone _____ / _____ - _____

Fax _____ / _____ - _____

List of Attendees _____

Total \$ _____ CK# _____

Enclose check or money order for registration fee (\$39/person) payable to:



Louisiana Nursery and Landscape Association
P. O. Box 25100
Baton Rouge, LA 70894-5100



DODSON GROUP®

Risk Management Since 1900

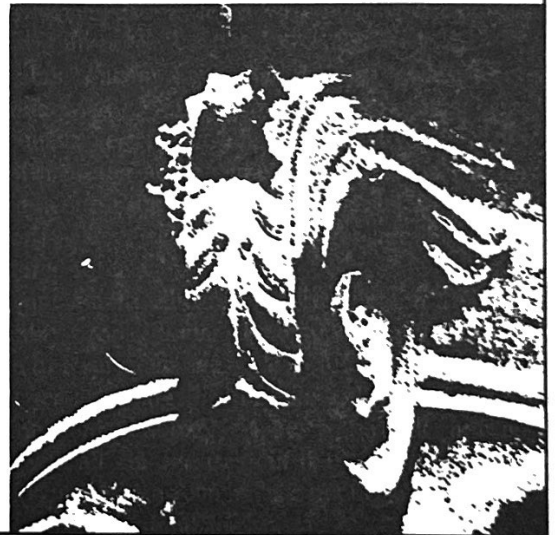
Louisiana Association of Nurserymen
is proud to announce its endorsement
of **Dodson Group®** as its source for
workers' compensation insurance.

WORKERS' COMPENSATION INSURANCE

WORK HARD. WORK SAFE. BUY SMART.
Choosing the right workers'
compensation provider for your
business shouldn't be left
to chance.

**EXPERIENCE COUNTS, AND
WE'VE GOT IT.**

- **WORKERS' COMPENSATION
SINCE 1912**
- **FREE LOSS CONTROL SERVICES**
- **SUPERIOR CLAIMS HANDLING**



More
than

\$ 5 MILLION

IN DIVIDENDS PAID TO PROGRAM PARTICIPANTS IN 1999!



DODSON GROUP®

Risk Management Since 1900

For more information,
contact:

Call: 800.825.9489

Fax: 800.825.6035


www.dodsongroup.com


State laws prohibit insurance companies
from guaranteeing future dividends.


Policies issued by CRE™ and EMIC™.

AWARDS FOR 2000 ANNOUNCED AT GSHE


The Louisiana Nursery and Landscape Association presented awards for 2000 during the annual membership meeting held in January in Mobile during the Gulf States Horticulture Expo. Each year LNLA presents awards for outstanding nurseryperson and young nurserypersons of the year. In addition, the James A. Foret award is presented. This award is given to an individual with a long-term record of service and accomplishments in Louisiana's green industry.

 **Wanda Metz Chase**, owner of Imaharas' Landscape Company in Baton Rouge was named Nurseryperson of the Year for 2000. She is a 1984 graduate of the LSU School of Landscape Architecture and a Louisiana licensed landscape architect. Wanda joined Imahara's, working with her uncle Walter Imahara, in 1987. She has actively served as a long-time member of the Baton Rouge Landscape Association. Wanda was awarded LAN's Young Nurseryperson of the Year in 1993 and was the 1995 recipient of SNA's David Laird award. She is currently serving as Louisiana's governor to ANLA and has served as treasurer, vice-president, and currently president of LNLA. Congratulations Wanda!

 The Young Nurseryperson of the Year for 2000 is **Scott Ricca** of Clegg's Nursery in Baton Rouge. Scott is co-owner of Clegg's Nursery and is a 1982 graduate of Louisiana Tech University. He currently serves as a board member of the Baton Rouge Landscape Association and is co-host of WJBO's Lawn and Garden Show in Baton Rouge. Congratulations Scott!

 LNLA's 2000 recipient of the James A. Foret award is **Margie Jenkins**, owner of Jenkins Farm and Nursery in Amite. "Miss Margie" was raised in Catcaw Creek, educated locally, and worked for many years at FHA in Covington. She married Bryant Jenkins in 1946 and they were jointly named recipients of LAN's Nurseryperson of the Year award in 1993. LAN Past President Rick Webb quoted in 1993 that "over the years she has read everything she could about plants at night, stuck cuttings during the day, traveled around and studied what others were doing and learned much. She has become a well-known plant authority." She is a member of the Southeast La. Nurserymen's Association, LNLA, SNA and ANLA, where she currently serves as Louisiana's Lt. Governor. Margie also is past

president of the Louisiana Chapter of the Azalea Society of America. Every visit with Miss Margie is "another opportunity to learn about plants." Congratulations Miss Margie!

 In addition to our "regular" awards, special recognition was bestowed on Buddy Lee and Gary Marmillion. **Buddy Lee** was presented a Professional Achievement award for his work in development of the Encore series of azaleas. **Gary Marmillion** was recognized with a Distinguished Service Award for his outstanding work in creating and maintaining the LAN website. *

'FIRST FRIDAY' PROGRAMS ATTRACT VISITORS

A program to take advantage of the arboretum and introduce new people to LSU Ag Center programs and facilities has brought hundreds of visitors to the Calhoun Research Station for monthly First Friday programs since they began in February 1998.

The horticulture and nature programs have been designed to complement the station's arboretum and nature trail, according to the station's resident director Dr. Ron Robbins.

"We serve people who are interested in beautifying home grounds and public areas," Robbins said, explaining that attendance includes homeowners and people responsible for public areas.

"This is new clientele for the Calhoun Research Station, which has been historically agricultural," he added.

The programs have focused on issues ranging from care and use of native plants in your landscape to fertilization, garden winterization, water gardens and birds, according to Steve Hotard, the LSU Ag Center's area forestry agent.

"Programs have been creative and unique," Hotard said. "They're free, interesting and have information people can take home and use."

Robbins and Hotard say the initial objective was to get more exposure and use of the Calhoun station's native plant arboretum and nature trail, but programs are now conducted at other locations, as well.

After using news releases prepared by LSU Ag Center Communications to publicize the first few programs in 1998, the station now uses traditional mailing lists, as well as e-mail, with approximately 200 names of people who have attended to announce each month's program. *

WORKERS COMPENSATION INSURANCE

Bobby L. Scott
Sales Representative

L. Benny Russo, Sr.
Marketing Representative

DODSON GROUP

Local Office 800.343.3604
17516 Shenandoah Trails Ave 225.756.5026
Baton Rouge, LA 70817 Fax 225.756.5027
bscott@dodsongroup.com

www.dodsongroup.com
9201 State Line Rd
Kansas City, MO 64114-3298
800.825.9489

Local Office 800.343.3586
PO Box 13202 318.445.4303
Alexandria, LA 71315 Fax 318.445.4959
www.dodsongroup.com



MINUTES
LAN Annual Membership Meeting
January 28, 2000
Mobile, AL

The annual membership meeting of the Louisiana Association of Nurserymen was held in Mobile, AL on Friday, January 28 during the Gulf States Horticulture Expo. A quorum was present. Breakfast was served.

Rick Webb welcomed everyone at 7:35am and Fred Hoogland opened the meeting with prayer. A moment of silence was observed for deceased members and industry friends: Rene Gaudet, George Bush, Tom Boudreaux, Roscoe Dean and Bobby Fletcher, Jr.

J.C. Patrick moved, Will Hammack seconded, that the minutes of 1999 annual membership meeting be approved as presented. Motion passed unanimously. Dan Gill and Allen Owings presented \$1,000 scholarships for 2000 to Carlos Doolittle (SLU), Melyssa Davis (LSU), Danny Mobley (La Tech), Lee Barham (LaTech), and Fred Fellner (Southern).

Rick Webb presented a Professional Achievement Award to Buddy Lee for development of the Encore azaleas and a Distinguished Service Award to Gary Marmillion for development of LAN's website.

Will and Delores Hammack (1999 Young Nurserypersons of the Year) presented the 2000 Young Nurserymen of the Year award to Scott Ricca. J. C. Patrick (1999 Nurseryperson of the Year) presented the 2000 Nurseryperson of the Year to Wanda Chase. Walter Imahara (1999 James A. Foret Award) presented the 2000 James A. Foret Award to Margie Jenkins.

Randy Bracy presented a financial report for 1999 with income of \$89,949 and expenses of \$51,584. Total year end balance of \$210,169. Pat Newman moved, Fred Hoogland seconded, to accept financial report as presented. Motion passed unanimously.

Rick Webb discussed the board of directors recommendation to change the associations name from Louisiana Association of Nurserymen to the Louisiana Nursery and Landscape Association. Will Hammack moved to accept, Fred Hoogland seconded. Motion passed with one opposed.

Randy Bracy presented the report of the nomination committee. Board of directors nominated for terms expiring in 2002 are: Tom Fennell, Andy Zimlich, Frances Thorne, Chris Bollich, and Mike Hoogland. Officer nominations were President- Wanda Chase, Vice President- Randy Bracy, and Treasurer- David Lowery. Murphy Johnson was nominated to fill David Lowery's board term expiring in 2001. Moved and seconded from the floor to accept report of the nominating committee. Motion passed unanimously.

Walter Imahara gave a brief SNA report. Bill Reese gave a brief ANLA report.

Rick Webb passed the gavel to Wanda Chase. Being no further business meeting adjourned at 8:45 a.m.*

ON THE WEB

American Nursery and Landscape Association

www.anla.org

Central LA Nurserymen's Association

www.clna.org/index.htm

Perennial Plant Association

www.perennialplant.org

Bracy's Nursery



(504) 748-4716
(504) 748-9955 fax

*Container-grown
fruit and berry plants,
flowering and shade trees,
and ornamental shrubs*

64624 Dummy Line Road
Amite, Louisiana 70422
bracys@i-55.com



Louisiana Nursery & Landscape ASSOCIATION

MINUTES

**Board of Directors Meeting
Wednesday, February 9, 2000
Baton Rouge, LA**

The meeting was called to order at 10:15am. The meeting was held at Burden Research Plantation in Baton Rouge. Attendees were Wanda Chase, Allen Owings, Dan Gill, Murphy Johnson, Tom Fennell, Rick Webb, Pat Newman, David Lowery, Randy Bracy, Chris Bollich, and Laura Crnko. Guests present were Robert Trawick (LSU) and Ed Bush (LSU). Members absent were Dan Devenport, Mike Hoogland, Frances Thorne, and Robby Barry. New board members, Murphy Johnson and Tom Fennell, were welcomed.

Randy Bracy moved, Rick Webb seconded, that the minutes of the December 8, 1999 board meeting in Lafayette be approved as presented. Motion passed unanimously.

Financial report for the 4th quarter 1999 was presented by Randy Bracy. End of 4th quarter showed current balance of \$210,169. Income in 1999 was \$89,949 (not including investment income) with expenses of \$51,584 for a total net income of \$38,365. David Lowery moved, Pat Newman seconded, that the financial report be approved as submitted. Motion passed unanimously.

Randy Bracy and Wanda Chase gave a brief report from 2000 GSHE. Income to LNLA should be about \$5,000-6,000 increase over 1999. This will be primarily due to increased number of booths (515 in '99, 600 in '00). Education attendance was approximately 430 in 2000 versus 647 last year. Trade show attendance was 3,900 (vs. 4,100 in '99). There was a discussion concerning the upcoming GSHE board meeting that will re-examine our initial agreement- current split is 70% AL, 15% MS, 15% LA. The board generally agreed that Rick and Wanda should constructively argue for a slight increase in this percentage in favor of MS and LA. We should receive payment for 2000 show in April or May.

Research funding for 2000 was discussed. Budget is \$23,000. Proposals have been submitted from Bush, Owings, Bates, and Kuehney. Discussion also included the need to increase dissemination of research being done at other southeastern U.S. land-grant universities. We do not need to duplicate this work. The board also discussed whether we (LNLA) should come up with projects and pursue someone to work on these or just solicit projects from interested researchers (no decision finalized). Short discussion was held on what is being done "research wise" at SLU, Louisiana Tech, Southern, and ULL. By general consensus, Pat Newman and the research

priority committee will review received proposals and determine allocations in time for distribution at the May board meeting. Board members desiring specific research to be conducted or funded need to contact Pat as soon as possible.

Wanda Chase requested that LNLA pursue the issue of regulations pertaining to sales tax collection requirements for landscape contractors. No final action taken. Craig Roussel has previously communicated to Wanda Chase and Allen Owings the contact person at Louisiana Department of Revenue to visit with on this issue.

Rick Webb moved, Pat Newman seconded, that LNLA join Louisiana Public Broadcasting- budget commitment of \$1,200. Motion passed. Rick Webb will coordinate 96 fifteen second tv spots for airing in Feb/March.

David Lowery presented proposed budget for 2000. Projected income of \$97,000 with expenses of \$108,675. Budget accepted unanimously (copy on file in LNLA office).

Wanda Chase discussed the LDAF Horticulture Commission's proposal to require continuing education for Louisiana licensed landscape contractors. Rick Webb moved, Murphy Johnson seconded, that we retroactively approve a letter sent by LNLA (signed by Allen Owings) that requests time to solicit industry input prior to Horticulture Commission action. Motion passed unanimously (copy of letter on file in LNLA office). Allen Owings will survey LNLA landscape architect members prior to the next Horticulture Commission meeting in late March.

Allen Owings and Wanda Chase will represent LNLA at the 2000 SNA State Officers Conference.

Randy Bracy requested that the board consider action against board members not regularly attending meetings. Allen Owings and Rick Webb stated that by-laws cover this topic - two unexcused consecutive absences from board meetings can result in dismissal from the board.

Wanda Chase provided information on new ANLA legislative action. Several new funds are being created at ANLA to increase legislative support and activities.

A brief discussion was held in regard to the certified nursery professional program. Do we modify or "leave as is" due to association name change. Dan Gill preferred "leaving as is" for current time.

Board approval was granted, Rick Webb moved and Dan Gill seconded, to Ed Bush and Allen Owings to hold a golf tourney in 2000 and split proceeds for LSU Ag research and extension support.

It was announced that Gary Marmillion has secured www.lnla.org as a new url for the association; www.lan.org will also remain active.

David Lowery will work with Cynthia Hutchinson on the proposal magazine. Advertisement rate sheets and tentative format/publication costs will be developed. First issue in early summer.

Mike Hoogland and Tom Fennell will pursue "videotape for retailers" idea and bring example (if possible) for next meeting.

Allen Fugler (LIPCA) presented a proposal from Louisiana Pest Control Insurance Co. to consider Blumberg & Associates as the endorsed provider of insurance services for LNLA members. Board will consider action shortly.

Next board meeting is Wednesday, May 10.

Being no further business meeting adjourned at 2:40pm. *

LNLA recently served as a sponsor for the **Louisiana Urban Forestry Council's** annual conference held in February on the LSU campus in Baton Rouge.

Terry Wilbourn is the new greenhouse territory manager for The Scotts Company responsible for Alabama, Arkansas, the Florida panhandle, Louisiana, Mississippi, and Tennessee. Scott's is a producer and marketer of professional horticulture and turf care products.

Allen Owings, Executive Secretary of LNLA, was recently re-appointed to the Nursery/Landscape Expo Policy Committee (formerly TAN/MISSLARK).

Over 80 green industry professionals attended a **Landscape and Grounds Maintenance Workshop** sponsored by LNLA and the LSU Ag Center on February 16th at Burden Research Plantation in Baton Rouge. Topics covered included landscape disease control, Encore azaleas, insurance considerations, landscape weeds, and economic value of landscaping.

A **Landscape and Grounds Maintenance Workshop** was held February 8th at the Calhoun Research Station in Calhoun. Approximately 25 green industry professionals attended. Topics covered were top crape myrtle cultivars, horticulture applications of lime and sulfur, and irrigation design considerations. Norman Winter, extension horticulturist with Mississippi State University, was the keynote speaker.

A **Certified Nursery Professional** training session and exam was held March 2-3 at Burden Research Plantation in Baton Rouge. Thirty-eight attendees were present.

"Leave a Legacy: 2000 Trees in 2000" is a program recently undertaken by LSU Hilltop Arboretum. Native tree species are being provided to Baton Rouge area residents in celebration of the new millennium. Trees were obtained from Live Oak Nursery. Louisiana green industry sponsors of this activity include LNLA members- Newton Landscape, Harb's Oasis, Moran's Nursery, Juliette's Rainbow Gardens, Bob's Tree Preservation. LNLA and the Baton Rouge Landscape Association are additional sponsors.

The **Southeast LA Nurserymen's Association** met Thursday, March 22 at Stewart's Restaurant east of Amite. LSU Ag Center entomologist Dale Pollet discussed re-registration procedures for Orthene and addressed pest control and management issues.

The **Southwest LA Association of Nurserymen** held their March meeting at the Catfish Hut in DeRidder. President Frances Thorne provided an update of LNLA activities and LSU Ag Center Horticulturist Allen Owings presented a program on optimizing pesticide performance.

Forest Hill's annual **Louisiana Nursery Festival** was held March 17-19. The annual event drew 25,000 estimated

attendance in 1999, while an estimated attendance of 30,000 was reached this year.

Congratulations !



Clyde Gehron, long-time LNLA board member and owner of Clyde Gehron-Teed Nursery, was "King of Mardi Gras" in DeRidder this year. Congratulations Clyde!

Pat Hegwood and **Ed Bush** of the LSU Department of Horticulture were recently initiated into the LSU chapter of the Honor Society of Agriculture, Gamma Sigma Delta, at LSU.

Glenn Stokes, Sr., owner of Stokes Tropicals in New Iberia, was featured in the February 2000 issue of Ornamental Outlook.

David Tatum, Secretary of the Mississippi Nursery and Landscape Association, was awarded the 1999 Outstanding Nurseryman Award during the association's annual membership meeting held at the Gulf States Horticultural Expo in Mobile. Congratulations David!

Scholarship Winners Named



LAN awarded five \$1,000 scholarship's during the 2000 annual membership meeting in Mobile. Winners were Carolos Doolittle (SLU), Melyssa Davis (LSU), Fred Felner (Southern), Danny Mobley (La. Tech), and Lee Barham (La. Tech).

- ★ **Doolittle** graduated from SLU in December 1999 with a B.S. in horticulture. He is a native of Loranger and maintained a GPA of 4.0 for his college studies. Doolittle is currently employed at McLendon's Nursery in Ponchatoula.
- ★ **Davis** is currently pursuing a Master's degree in ornamental horticulture at LSU. She is a native of Jennings and maintains a graduate school GPA of 3.81. Davis's thesis project is evaluating results of heat stress on herbaceous perennials.
- ★ **Fellner** is assistant director of Landscape services at LSU and is also pursuing (full-time) a Ph'D degree in urban forestry from Southern University. Fellner is a resident of Greenwell Springs.
- ★ **Mobley** is a resident of Simsboro and is pursuing a plant science/horticulture degree at Louisiana Tech. Mobley is very active in La. Tech horticulture activities.
- ★ **Barham** is a resident of Ruston and is currently pursuing a horticulture degree at Louisiana Tech. He has a 3.68 GPA and is currently serving as treasurer of the La. Tech Horticulture Society.

Congratulations to these five students!

MID-SOUTH GREENHOUSE GROWERS CONFERENCE

June 6 - 8, 2000
Ramada Inn
Southwest Conference Center
1525 Ellis Avenue
Jackson, MS

*"The next millennium - making visions
become realities."*

Sponsored by:

Arkansas Cooperative Extension Service
LSU Agricultural Center
Louisiana Nursery and Landscape Assoc.
Mississippi Cooperative Extension Service
Mississippi Nursery and Landscape Assoc.

cont'd from pg 2

remember back in 1976, when Uncle Walt and my grandparents returned from their first visit to Japan. They were amazed how each home had a fax machine. They always say '20 years behind Times.' LNLA offers the services of Gary Marmillion to assist in you web page development. As well as this fall, we hope to offer a free class to design and maintain your own web pages. (I'm in the class right now - absolutely free, hands-on for small business owners. Please call right away if you're interested, so we can reserve the space and develop an industry specific program.)

Another communication goal is to produce the LNLA magazine (thank you, David Lowery & Committee). Remember those heart-warming stories from past publications that bound us as family, and introduced new products, plants & ideas. Its all coming back, slowly but surely, remember ... we are all volunteers serving each other in love.

Well, now I'm becoming sentimental, so I best say my farewells. Remember to make some goals for yourselves this year - be specific and be realistic. My husband and I also make personal goals, outlined as home (honey-doo), business/career, financial, spiritual and personal (exercising 3 x/week - ha!). When a goal is accomplished, date it and cross it off the list. I love you guys, and I pray God's riches blessings for you as your personal goals give way to God's plans and purposes (Jeremiah 29:11). *

Wanda Chase, LNLA's President for 2000, owns and operates Imahara's Landscape, Inc. in Baton Rouge, LA. She also serves the 'green industry' as ANLA Governor and GSHE Representative for Louisiana.

FARM BUREAU NURSERY & GREENHOUSE ADVISORY COMMITTEE REPORT *By Dan Devenport*

The American Farm Bureau Federation's Ag Nursery & Greenhouse Advisory Committee met in New Orleans, La. January 27-29, 2000. This committee consists of 16 members from major nursery producing states in the USA. Other committees meeting in New Orleans included Labor, Citrus and Horticulture Crops.

Bob Stallman, President, American Farm Bureau Federation addressed the group and everyone in attendance enjoyed his comments, views, and outlook for his new reign as president. He reminds me of Governor Foster in that he is straight shooting and honest. Perhaps the best thing about him is that he comes from Texas and many of the commodities we grow also grow in his state. Hopefully none of our minor crops will be forgotten because of this commonality.

The Food quality Protection Act remains our committee's #1 priority. I feel as though we have slowed down the EPA a little with legislation, letter writing and litigation. Hopefully we'll win this one.

Labor is again our second priority. Guest worker reform, minimum wage, OSHA's proposed ergonomic standards may hit our industry very hard if implemented.

Clean water act is something Louisiana will have to deal with in the near future. In some of the states (i.e. California and Oregon) water wells 8" or bigger are being gauged and monitored for usage.

Our committee heard a report about the Global Outlook for Speciality Crops, farmer demographics and reform in the U.S. House of Representatives.

After attending meetings like this I feel as though I'm retaking plant pathology. Makes you wonder how anything can grow with all the diseases out there. All the regulations that farmers, nurserymen etc. have to put up with makes you wonder how we can stay in business.

I feel fortunate to be a part of an organization that looks out for our industry as much as Farm Bureau. I'm sure that a lot of people in our industry have no idea that we do such a thing and it is my goal that the message is spread every chance I get. *

Dan Devenport serves on the Farm Bureau Nurserymen's Committee. He also serves on LNLA's Board of Directors and the Research Priority Committee. Dan and Christine, his wife, own and operate Dan's Nursery in Abbeville, LA.

LFBF'S ANNUAL AG LABOR SEMINAR Tuesday, April 18, 2000 9:00 a.m. - 2:30 p.m. Radisson Hotel - Conference Center Baton Rouge, LA

Registration: \$20.00 includes a banquet luncheon
Speakers: Dan Bremer, Agristaff Wage & Labor H2A specialist
Larry Fabacher, Immigration Law Attorney & Professor
James Pilot, Dept of Labor H-2A Housing Inspector
Brian Little, AFB Sr. Legislative Director, Wash., D.C.
Contact: Brian Breaux, 225.922.6210 or 922.6243



Certified Nursery Professional Manual Review and Exam - 2000

Mar 2 - 3
Burden Research
Plantation
Baton Rouge

July 6 - 7
Barnwell
Center
Shreveport

September 7 - 8
Botanical Garden Center
Study Room
New Orleans

Register for the Manual Review and Exam by selecting the appropriate location above:

Business Name _____
 Address _____
 City, State, Zip _____
 Phone _____
 FAX _____

Person(s) Registering:	Name / Section	Fee(s)
\$75 per person for review and full exam.	_____	_____
\$15 per section(s) re-taken by each person.	_____	_____
* Please specify re-take section(s) if known.	_____	_____
Sec #1- Plant Classification, Growth & Development	_____	_____
Sec #2- Understanding Pests and Their Control	_____	_____
Sec #3- Culture of Nursery Stock in Retail Yards	_____	_____
Sec #4- Landscape Contracting, Tree & Turf Mgt.	_____	_____
Sec #5- Plant Identification	_____	_____
\$35 per person for manual review only (no exam) in preparation for LDAF license test or professional training.	_____	_____
\$50 per copy of, " <i>Louisiana Nurserymen's Manual for the Environmental Horticultural Industry</i> ", the suggested manual for this course.	Manuals # _____	_____

Make check or money order payable to:

Louisiana Nursery & Landscape Association

Mail check to: Allen Owings
 c/o Louisiana Nursery and Landscape Association
 PO Box 25100
 Baton Rouge, LA 70894-5100

Total \$ _____
 Check # _____
 Date: _____

For further information contact: Allen Owings - Ph# 225/ 388-2222
 Fax 225/ 388-1068
 E-mail aowings@agctr.lsu.edu



Louisiana Nursery and Landscape Association

"Serving Louisiana's Green Industry Since 1954"

Phone 225/ 388-2222, FAX 225/ 388-1068

Membership Application - 2000

Please select **X** all categories that apply:

- | | |
|---|---|
| <input type="checkbox"/> Independent Retail Garden Center | <input type="checkbox"/> Extension/Education/Research |
| <input type="checkbox"/> Mass Merchandiser | <input type="checkbox"/> Student |
| <input type="checkbox"/> Wholesale Greenhouse Grower | <input type="checkbox"/> Arborist |
| <input type="checkbox"/> Allied Supplies | <input type="checkbox"/> Landscape Design/Architect |
| <input type="checkbox"/> Horticultural Services | <input type="checkbox"/> Landscape Contractor |
| <input type="checkbox"/> Wholesale Woody Grower | <input type="checkbox"/> Sod Grower |
| <input type="checkbox"/> Lawn Maintenance | <input type="checkbox"/> Other _____ |

Please select **X** your LNLA membership type:

Regular Members - \$ Based on gross sales

Any corporation, partnership, firm, or person engaged in any facet of the green industry or other related business with a definite address and appropriate facilities having further been actively engaged in the nursery business in a reputable, trustworthy and ethical manner for one year in Louisiana.

	Annual Gross Sales	Dues
<input type="checkbox"/>	\$0 - \$100,000	\$50.00
<input type="checkbox"/>	\$100,00 - \$250,000	\$75.00
<input type="checkbox"/>	\$250,000	\$150.00

Associate Members - \$100.00

Associate members shall be reputable persons, firms, or corporations outside the state of Louisiana actively engaged in the growing and selling of nursery stock, and reputable persons, firms, or corporations inside the state of Louisiana engaged in the supplying of accessories incidental to the nursery business.

Affiliate Members - \$25.00

Business Employed By : _____

A person or persons employed in any capacity in any nursery industry or establishment, or allied industry which is a member in good standing of the association.

Student Members - \$ No Charge

Name of university and location: _____

Any student actively enrolled on a full-time basis in a Louisiana university and majoring in horticulture or a closely allied field.

Governmental Agency/Educational - \$ No Charge

Any person actively employed by a governmental agency or educational institution and having a job responsibility in horticulture or a closely allied field.

Check here for LNLA Membership Plaque 2000 Sticker Plaque & Sticker (all new members receive both)

Please type or print clearly

Company Name _____ Representative's Name _____

Mailing Address _____

Street or PO Box _____ City _____ State _____ Zip _____

Telephone (____) _____ - _____, x _____ FAX (____) _____ - _____ E-mail _____

Renewal Date: _____ Check # _____ Amount Remitted \$ _____
 New Member

Return 2000 dues application and check to:

Louisiana Nursery and Landscape Association, PO Box 25100, Baton Rouge, LA 70894-5100

Office Use Only:
<input type="checkbox"/> Entered _____
<input type="checkbox"/> P & S _____
<input type="checkbox"/> Filing _____

Quality Pine Straw
• String or Wire Tied •

*Call Us
 For:*

- Quality Pine Straw, clean & fresh
- Drop trailers, specified delivery times
- Prompt dependable service
- Full and partial truckload deliveries available

*We guarantee the quality
 of our Pine Straw and
 personally stand behind
 our product.*

Iris Townsend Stubbs and Calvin Stubbs, Owners

Member of: AAA, AFNN, ANA (AL), ANA (AR),
 ANLA, FNGA, GGIA, INA (IL), INA (IN), LAN,
 LMA, MNA, NCAN, PLSA, SCNA, SNA,
 TNLA (TN), TNLA (TX)



References and prices for your area
 are available upon request.



**FL Pine Straw
 Supply Co.**

Post Office Box 158
 Mayo, Florida 32066-0158
Phone (904) 294-3411
Fax (904) 294-1003

E-mail: iris@floridapinestraw.com
fpssco@suwanneevalley.net
 Website: floridapinestraw.com

Address Services Requested

Baton Rouge, LA 70894
 Post Office Box 25100



Bulk Rate
 U.S. POSTAGE
 PAID
 Permit No. 1648
 Baton Rouge, LA